

205

MONTAGUE



205 MONTAGUE

205 Montague is ideally located for any tenant that wants to be a part of downtown Brooklyn's dynamic resurgence. With an address located at the hub of downtown Brooklyn's banking and municipal center, 205 Montague is situated within minutes of federal, state & local courts, numerous municipal agencies and academic institutions. This exceptional address is within walking distance of ten subway lines and is one train stop away from Lower Manhattan.



TREELINE

THE TREELINE COMPANIES

For leasing information, please call:

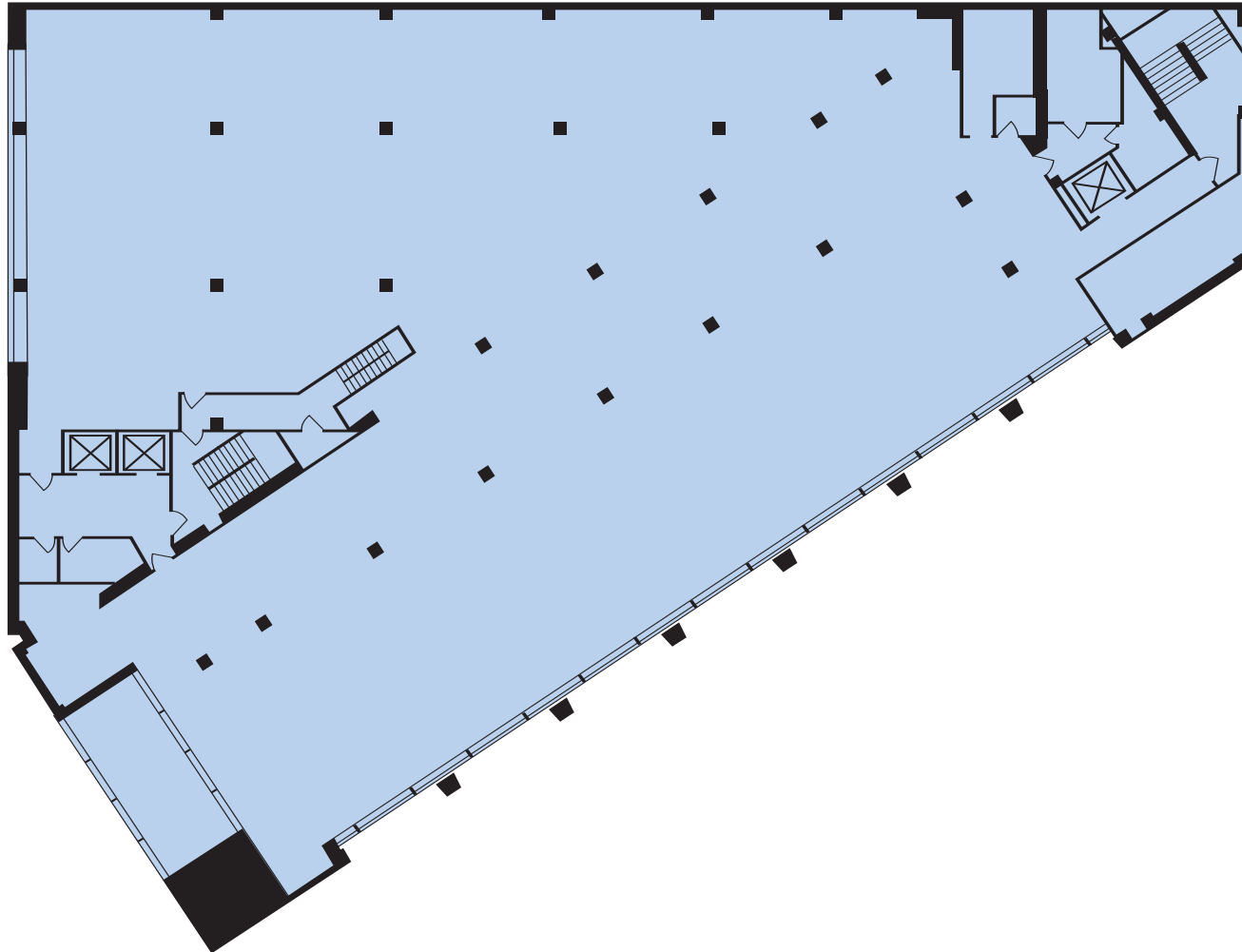
Kraig L. Silver
516.837.8000

WWW.TREELINECO.COM

205

MONTAGUE

Approximately 18,000 SF



TREELINE

THE TREELINE COMPANIES

For leasing information, please call:

Kraig L. Silver
516.837.8000

WWW.TREELINECO.COM